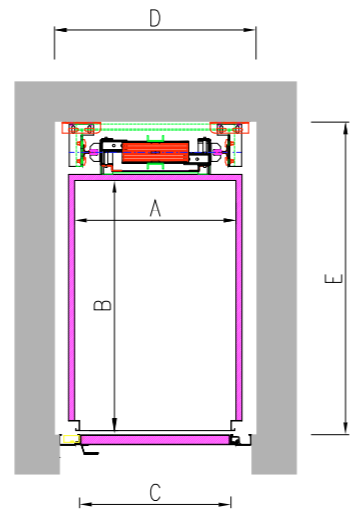
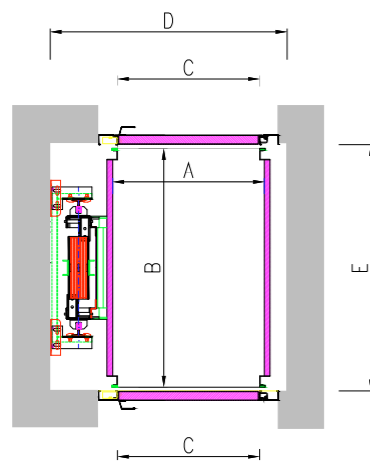


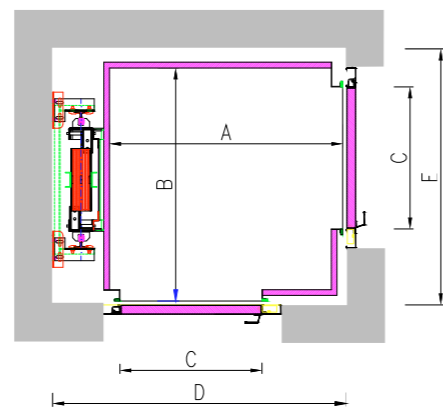
Portata Kg	Dimensioni cabina (mm)		Luce porta (mm)	Dimensioni vano (mm)	
	A	B	C	D	E
UOMO - PRESENTE					
250	800	1200	750	1250	1350



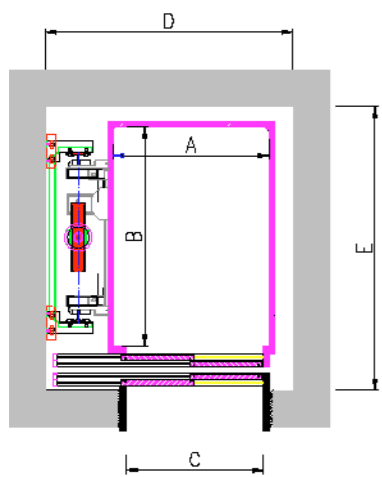
Portata Kg	Dimensioni cabina (mm)		Luce porta (mm)	Dimensioni vano (mm)	
	A	B	C	D	E
UOMO - PRESENTE					
250	800	1200	750	1000	1550



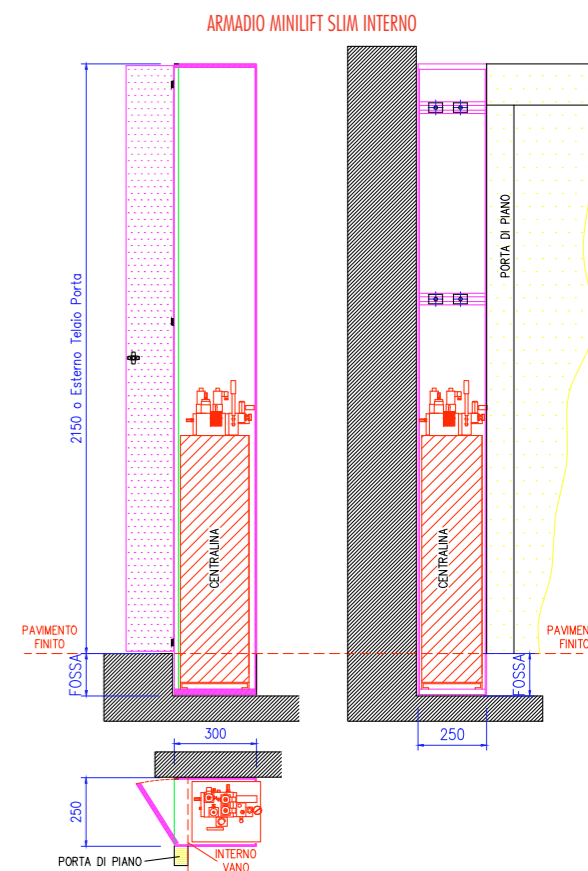
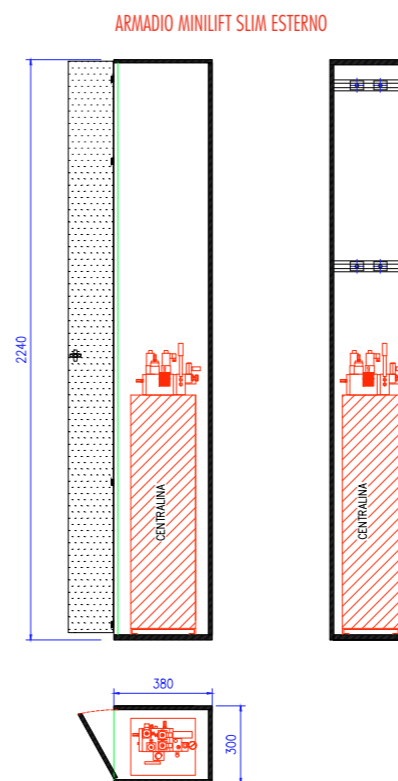
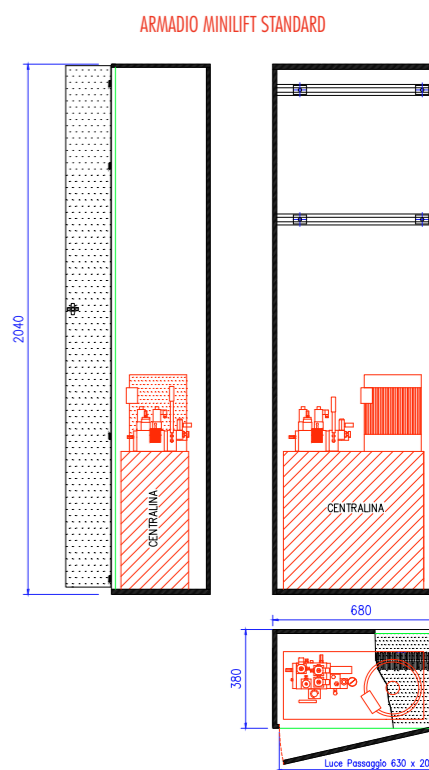
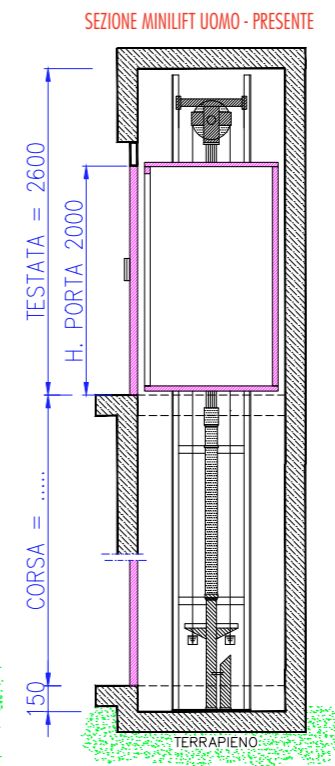
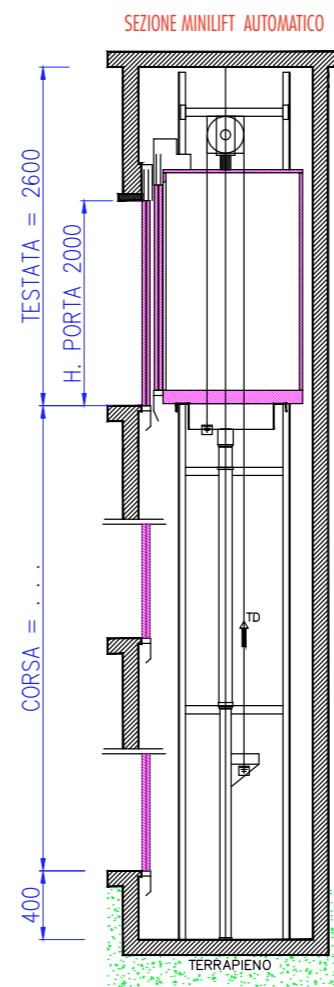
Portata Kg	Dimensioni cabina (mm)		Luce porta (mm)	Dimensioni vano (mm)	
	A	B	C	D	E
MINILIFT UOMO - PRESENTE DOPPIO ACCESSO FRONTALE					
250	800	1200	750	1250	1300



Portata Kg	Dimensioni cabina (mm)		Luce porta (mm)	Dimensioni vano (mm)	
	A	B	C	D	E
MINILIFT UOMO - PRESENTE DOPPIO ACCESSO FRONTALE					
360	1200	1200	750	1550	1350



Portata Kg	Dimensioni cabina (mm)		Luce porta (mm)	Dimensioni vano (mm)	
	A	B	C	D	E
AUTOMATICO (NO UOMO - PRESENTE)					
250	850	1200	750	1350	1550



NOTA: le misure riportate nelle tabelle rispettano le normative L13/89 e DPR236/89. Per qualunque altra esigenza rivolgersi ai nostri uffici, saremo lieti di soddisfare qualsiasi vostra richiesta.